



**KENYA INSTITUTE OF SUPPLIES MANAGEMENT**  
*Promoting Professionalism in Supply Chain Management*

# The Weekly Bulletin

16th July 2024 | Wk 36



### Operationalization of the North Rift Regional Chapter

The Institute operationalized the North Rift Regional Chapter in Eldoret on Friday, 12th July 2024 at Sirikwa Hotel...(Pg 3).



### Sourcing and Procurement In Logistics Workshop

The Kenya Institute of Supplies Management organized a workshop for procurement and SCM practitioners in the logistics sector...(Pg 4).



### 8th Edition of the Kaptagat Forest Annual Tree Growing

KISM was proud to participate in the 8th Edition of the Kaptagat Forest Annual Tree Growing Event...(Pg 5).

# KISM – MTRH EXCHANGE ON HEALTH SUPPLY CHAIN MANAGEMENT



KISM chairperson, John Karani (Far Left) and KISM CEO, Kenneth Matiba, with MTRH CEO, Dr. Philip Kirwa, during a courtesy visit at the Moi Teaching and Referral Hospital in Eldoret.

KISM Leadership led by the Chairman Mr. John Karani, MBS, CM Mr. Moses Omondi and CEO Mr. Kenneth Matiba held a discussion with the CEO of Moi Teaching and Referral Hospital (MTRH) Dr. Philip K. Kirwa to discuss cooperation and partnership in the delivery of health SCM practice in the Country. The team also discussed, capacity building, compliance, and members welfare among other interventions.

## Engaging Members at the County Levels



KISM Leadership led by the Chairman Mr. John Karani, MBS, CM Mr. Moses Omondi and CEO Mr. Kenneth Matiba engaged members of the Institute to appreciate their challenges and opportunities that exists in the professionalization of SCM at the County levels. The KISM team also met with the County Leadership represented by the CECM Finance, Mr. Micah Kipkosgei

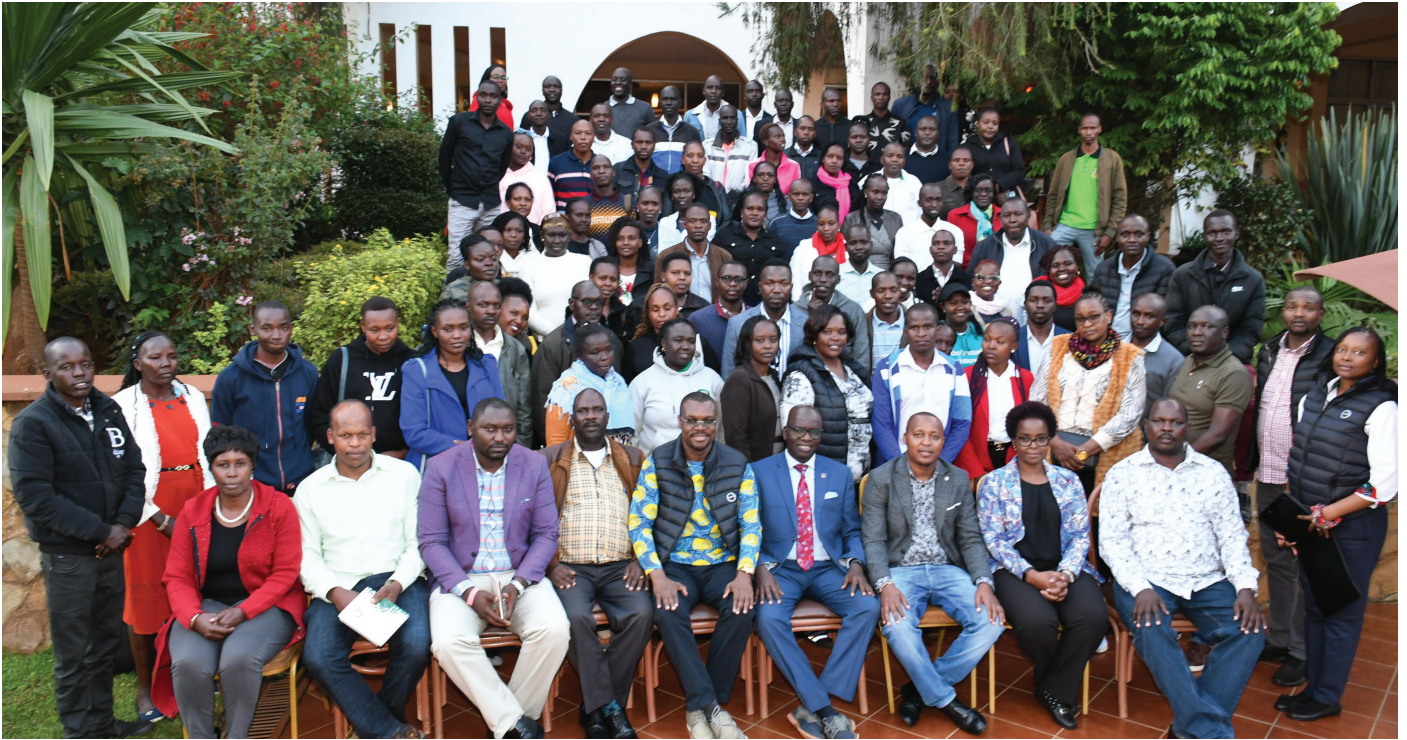
Rogony and Chief Officer Finance on matters critical for the growth of the members including compliance matters.

## Cooperation with Moi University in enhancing professionalization of SCM



KISM Leadership led by the Chairman Mr. John Karani, MBS, CM Mr. Moses Omondi and CEO Mr. Kenneth Matiba held a constructive exchange with the Faculty of Business at Moi University led by Prof. Cheboi to advance cooperation in professionalization of Supply Chain Management Practice in the Country.

# CHANGE! NORTH RIFT REGIONAL CHAPTER OPERATIONALIZATION



KISM chairperson, John Karani (Centre), CM Moses Omondi, CM Maryanne, CM Kanda, CM Fidel, and KISM CEO, Kenneth Matiba pose for a group photo with North Rift Regional Chapter members during its launch held at Sirikwa Hotel, Eldoret.

The Institute operationalized the North Rift Regional Chapter in Eldoret on Friday, 12th July 2024 at Sirikwa Hotel. The Chairman Mr. Karani led the Council members to officiate the launch. Present during the launch was CM Omondi, CM Maryanne, CM Kanda, CM Fidel and the CEO Mr. Kenneth Matiba.

Professionals were drawn from Nandi, Uasin Gishu, TranNzoia, West Pokot, Baringo, and Elgeyo Marakwet Counties. This is part of the ongoing reforms aimed at making the Institute's services available at the grassroots.

Members were urged to actively participate in the chapter and leverage their expertise to significantly improve these practices throughout the country.

The Secretariat conveys gratitude for your contributions and wish you continued success in your endeavors including in the next steps towards operationalization of this regional chapter.

Read More on the Regional Chapter Governance Policy <https://kism.or.ke/wp-content/uploads/2024/06/4.6.2024-REGIONAL-CHAPTER-GOVERNANCE-POLICY-V6-Final-Updated-JK-Signed.pdf>

Mark your calendars! The North Eastern Chapter is hosting a meeting on **July 19th, 2024 at 2:00 PM** at the **Grand Oasis Hotel**. Book your registration on: [events.kism.or.ke](https://events.kism.or.ke)



North Rift Regional Chapter members following proceedings during the launch of the regional chapter, at Sirikwa Hotel, Eldoret

**NORTH EASTERN**  
MEMBERS REGIONAL FORUM

**REGISTER NOW | [events.kism.or.ke](https://events.kism.or.ke)**

FRIDAY  
19<sup>TH</sup> JULY  
2024 | 2PM-5PM | WAJIR

@kismgt  
Kenya Institute of Supplies Management  
Call 011024800 or Email [Programs@kism.or.ke](mailto:Programs@kism.or.ke)

# SOURCING AND PROCUREMENT IN LOGISTICS WORKSHOP



Procurement and Supply Chain professionals pose for a group photo after the sourcing and procurement in logistics workshop

The Institute acknowledges the logistics sector's inherent complexities. To address this, we organized a training program aimed at:

- a. Empowering and equipping participants with the skills to navigate these complexities.
- b. Highlighting the impact of logistics and supply chain management (SCM) on efficient and effective service delivery.
- c. Clarifying the role of logistics and SCM professionals in the service delivery process.

- d. Developing policy proposals for integrating business processes.

The training attracted a diverse group of professionals, from both private and public sector including: Logistics managers and officers across various departments, Purchasing and contract supply chain managers and executives, Engineering, maintenance, and operational personnel, Distribution and warehouse managers among other



# KISM PARTICIPATES THE 8TH EDITION OF THE KAPTAGAT FOREST ANNUAL TREE GROWING EVENT



*KISM Members during the 8th edition of the Kaptagat Forest Annual Tree Growing Event at Kaptagat Girls High School*

KISM was proud to participate in the 8th Edition of the Kaptagat Forest Annual Tree Growing Event officiated on 13th July 2024 at Kaptagat Girls High School. The event was graced by His Excellency the President Dr. William Samoei Ruto, CGH



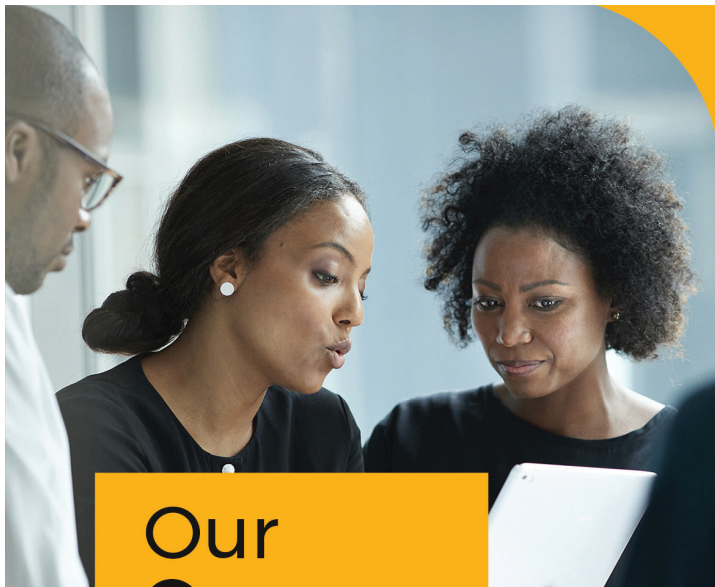
"We're committed to environmental sustainability and giving back to our community. Together, we can create a greener future for Kenya."



## Supply Chain Quote of the Week

The line between disorder and order lies in logistics.

~Sun Tzu



# Our Courses

Founded by the Kenya Institute of Supplies Management (KISM) and registered under TVET Authority, the school, now invites applications from persons interested in pursuing Supply Chain Management courses offered, which include;

## Kenya Institute of Supplies Examination Board (KISEB) Courses

1. Associate in Procurement and Supply of Kenya (APS-K)
2. Certified Procurement and Supply Professional of Kenya (CPSP-K)

## Chartered Institute of Procurement and Supply (CIPS) Courses

- CIPS Level 2 Certificate in Procurement and Supply Operations
- CIPS Level 3 Advanced Certificate in Procurement and Supply Operations
- CIPS Level 4 Diploma in Procurement and Supply
- CIPS Level 5 Advanced Diploma in Procurement and Supply
- CIPS Level 6 Professional Diploma in Procurement and Supply

## Fee Structure

CIPS	Tuition fee per unit	Virtual fees per unit	Tuition fee (All units)	Virtual fees (All units)
Dip (Day/Eve/Sat)	Ksh. 7,000	Ksh. 7,000	Ksh. 56,000	Ksh. 56,000
Adv. Dip (Eve/Sat)	Ksh. 7,000	Ksh. 7,000	Ksh. 56,000	Ksh. 56,000
Prof. Dip (Eve/Sat)	Ksh. 8,400	Ksh. 8,400	Ksh. 58,800	Ksh. 58,800

KISEB	In-person fees per unit	Virtual fees per unit	Tuition fee (All units)	Virtual fees (All units)
APS I	Ksh. 5,000	Ksh. 5,000	Ksh. 35,000	Ksh. 35,000
APS II & III	Ksh. 7,000	Ksh. 7,000	Ksh. 49,000	Ksh. 49,000
CPSP I & II	Ksh. 8,000	Ksh. 8,000	Ksh. 48,000	Ksh. 48,000
CPSP III	Ksh. 8,500	Ksh. 8,500	Ksh. 51,000	Ksh. 51,000

CILT Fee Structure to be shared in due course

**Study mode:** Open, Distance and E-Learning (ODEL)

**Intake:** Ongoing

**Register Now**

Your satisfaction is our priority! Our dedicated Customer Experience team is here to serve you with excellence



**+254 111 024800**



# OPERATIONALIZATION OF THE REGIONAL CHAPTERS

On behalf of the Council, KISM extends a heartfelt thank you to all members who participated in the recent Members Forums held across the Coast Region, Central Rift (Nakuru), Lower Eastern (Machakos) region and Nyanza Regions

Your active participation and insightful contributions were the cornerstone of these highly successful forums. The vibrant discussions, knowledge exchange, and chance to connect with peers fostered an incredibly rewarding experience for all.

At KISM, we are truly grateful for your commitment to continuous learning and professional growth. Your active involvement exemplifies the KISM community's unwavering dedication to elevating management practices!

We invite you for the remaining member forums. Book Now at <https://events.kism.or.ke/events>



**NORTH EASTERN**  
MEMBERS REGIONAL FORUM

**REGISTER NOW | events.kism.or.ke**

FRIDAY 19<sup>TH</sup> JULY 2024 | 2PM-5PM | WAJIR

@kismgt  
Kenya Institute of Supplies Management  
Call 0111024800 or Email [Programs@kism.or.ke](mailto:Programs@kism.or.ke)



**Mt. Kenya**  
MEMBERS REGIONAL FORUM

**REGISTER NOW**  
events.kism.or.ke

FRIDAY, 26<sup>TH</sup> JULY 2024  
2PM-5PM | NYERI



**WESTERN**  
MEMBERS REGIONAL FORUM

**9<sup>TH</sup> AUG** | 2PM-5PM  
KAKAMEGA GOLF HOTEL  
KAKAMEGA

**REGISTER NOW**  
events.kism.or.ke

@kismgt  
Kenya Institute of Supplies Management  
Call 0111024800 or Email [Programs@kism.or.ke](mailto:Programs@kism.or.ke)



**SOUTH RIFT**  
MEMBERS REGIONAL FORUM

**REGISTER NOW**  
events.kism.or.ke

FRIDAY, 2<sup>ND</sup> AUGUST 2024 | BOMET

@kismgt  
Kenya Institute of Supplies Management  
Call 0111024800 or Email [Programs@kism.or.ke](mailto:Programs@kism.or.ke)

SAVE THE DATE



# PROFESSIONALIZING HEALTH SUPPLY CHAIN MANAGEMENT



16<sup>TH</sup>-20<sup>TH</sup>  
SEPT 2024

WHITESANDS HOTEL, MOMBASA

MEMBERS: KSH.60,000

NON-MEMBERS: KSH.65,000

@Kenya Institute of Supplies Management



## Call for Articles

### TOPICS OF INTEREST

**Procurement Best Practices:** Innovative strategies, case studies, and success stories.

**Supply Chain Management:** Trends, challenges, and solutions in the evolving supply chain landscape.

**Sustainability in Procurement:** Green procurement practices and sustainability initiatives.

**Technology in Procurement:** The impact of digital transformation, AI, and other technologies.

**Regulatory Compliance:** Navigating the complexities of procurement regulations.

### ANNOUNCEMENT!

We are excited to announce the upcoming edition of the Wanunuzi Newsletter, and we invite you to **share your insights, expertise, and experiences** with our vibrant community. Your contributions are vital to creating a rich and diverse publication that reflects the knowledge and passion of our members.

Please email your article to [communications@kism.or.ke](mailto:communications@kism.or.ke) with the subject line "Newsletter Article Submission." Our editorial team will review all submissions, and selected articles will be featured in the next edition of our Newsletter.



# IN-HOUSE CAPACITY BUILDING INITIATIVES



SCM Professionals during an in-house training by the Kenya Institute of Supplies Management

The customized in-house training programmes are designed to equip practitioners and stakeholders with practical skills and knowledge to carry out procurement within the confines of prevailing procurement law and guidelines, while promoting professionalism and best practice in SCM practice. This helps to increase overall organizational effectiveness through the application of tested procurement and supply chain management concepts.

We continue to conduct customized procurement and SCM trainings on In-House basis geared towards achieving efficiency and value for money in supply chains management.

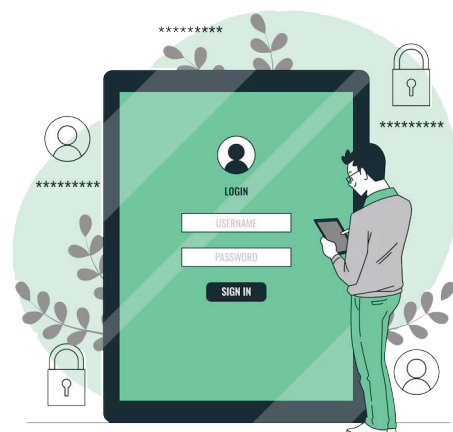
Upcoming In-House Training in the month of July.

1. KenGen on PPAD Act 2015 & PPADR 2020
2. The Judiciary on Supply Chain Management Staff sensitization
3. Kenya Roads Board (KRB) on Staff & Supplier sensitization
4. Kenya Civil Aviation Association (KCAA) on PPAD Act 2015 & PPADR 2020

Ready to upskill your team? Contact us today to discuss your on-site training needs!"

## SELF-SERVICE PORTAL

We are constantly improving our services with our automated system. Our member portal provides you with a platform to access our services anytime and from the comfort of your home. You can access your member portal by visiting [member.kism.or.ke](http://member.kism.or.ke).



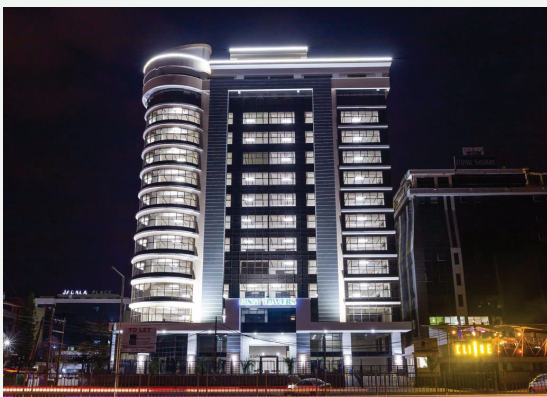
# WEEKLY MOMENTS





# FOR RENT!

## KISM TOWERS, NGONG ROAD



### Features & Amenities:

- ▶ Grade A office space available to lease.
- ▶ Main KPLC power connection with Acoustic.
- ▶ Standby Generator.
- ▶ High-speed lift.
- ▶ Borehole water supply.
- ▶ CCTV surveillance, and top-notch onsite security.
- ▶ Onsite parking.
- ▶ Fiber backbone.



KISM Towers is a modern 17 storey commercial office building in the heart of Ngong Road, Kilimani area. The office complex offers high quality spaces that are designed to International Standards with a unique architectural design that has beautiful views of the surrounding area as well as views of Ngong Hills.

**CALL TODAY!**

**MR PATRICK**

**0720 598 615**

**NW REALITE**

# CPD Corner

Click on the Link below  
to register for (any of) the  
listed events  
[events.kism.or.ke](https://events.kism.or.ke)



## Lined Up Activities

### Workshop: Trainer of Trainers

Date: 21st to 23rd August 2024

3 Days at KISM Towers

Cost: Members, Ksh. 20,000 +VAT

Non-Members, Ksh. 20,000 +VAT

### Workshop: Emotional Intelligence and Corporate Culture

Date: 17th July 2 Hrs

Virtual

Cost: Members-FREE

Non-Members- FREE

### Workshop: Heads of Procurement /Supply Chain Management Forum

Date: 12th – 16th August 2024

5 Days in Mombasa

Cost: Members- Ksh. 60,000 +VAT

Non-Members- Ksh. 65,000 +VAT

### Workshop: Resilient and Sustainable Logistics Supply Chain

Date: 26th – 30th August 2024

5 Days in Mombasa

Cost: Members- Ksh. 60,000 +VAT

Non-Members- Ksh. 65,000 +VAT

### Workshop: Professionalizing Humanitarian/NGO Supply Chain Management

Date: 22nd – 26th July

5 Days in Naivasha

Cost: Members, Ksh. 60,000 +VAT

Non-Members, Ksh. 65,000 +VAT

### Workshop: Acquiring the Right Skill Sets for a Career in Supply Chain

Date: 31st July 2 Hrs

Virtual

Cost: Members, Ksh. 1,500 +VAT

Non-Members, Ksh. 1,500 +VAT

**KENYA INSTITUTE OF SUPPLIES MANAGEMENT**  
Promoting Professionalism in Supply Chain Management

## Professionalizing Humanitarian/NGO Supply Chain Management

22<sup>ND</sup> - 26<sup>TH</sup> JULY, 2024, NAIVASHA

**WORKSHOP FEES**  
Members Kshs. 60,000 + 16% VAT  
Non-members Kshs. 65,000 + 16% VAT

**5 Days**

@kismgt  
Kenya Institute of Supplies Management  
Call 0111024800 or Email [Programs@kism.or.ke](mailto:Programs@kism.or.ke)  
[www.kism.or.ke](http://www.kism.or.ke)

REGISTER YOUR PARTICIPATION ON THE WEBSITE  
<http://events.kism.or.ke/events>



## Contact Us

---



Kenya Institute of Supplies Management  
KISM TOWERS, 12th Floor – Ngong  
Road, Nairobi



[www.kism.or.ke](http://www.kism.or.ke)



[admin@kism.or.ke](mailto:admin@kism.or.ke)



+254 111 024800

X: @kismgt

Facebook: Kenya Institute of Supplies Management

LinkedIn: Kenya Institute of Supplies Management

Copyright © 2024 by the Kenya Institute of Supplies Management

All rights reserved.

No part of this publication may be reproduced, distributed, or transmitted in any form or by any means, including photocopying, recording, or other electronic or mechanical methods, without the prior written permission of the publisher, except as permitted by Kenyan copyright law. For permission requests, contact [admin@kism.or.ke](mailto:admin@kism.or.ke).

---

Next Issue #

---